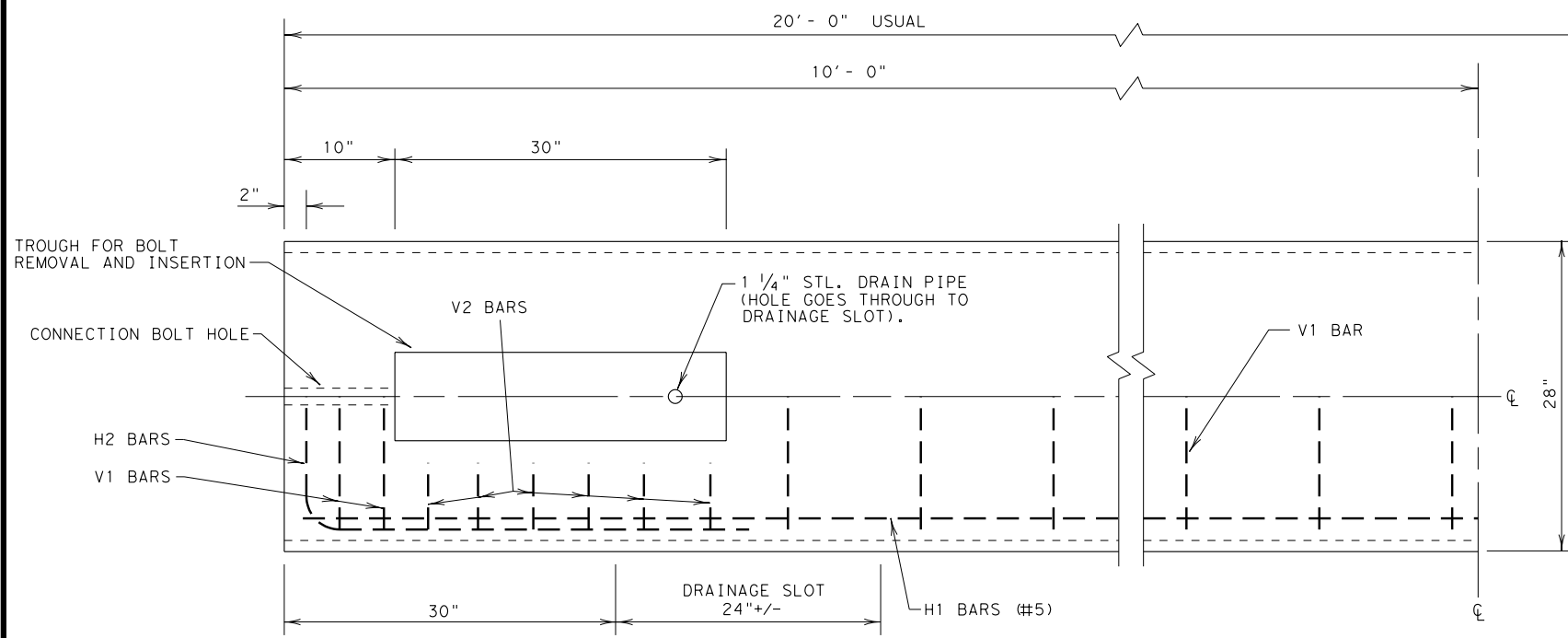


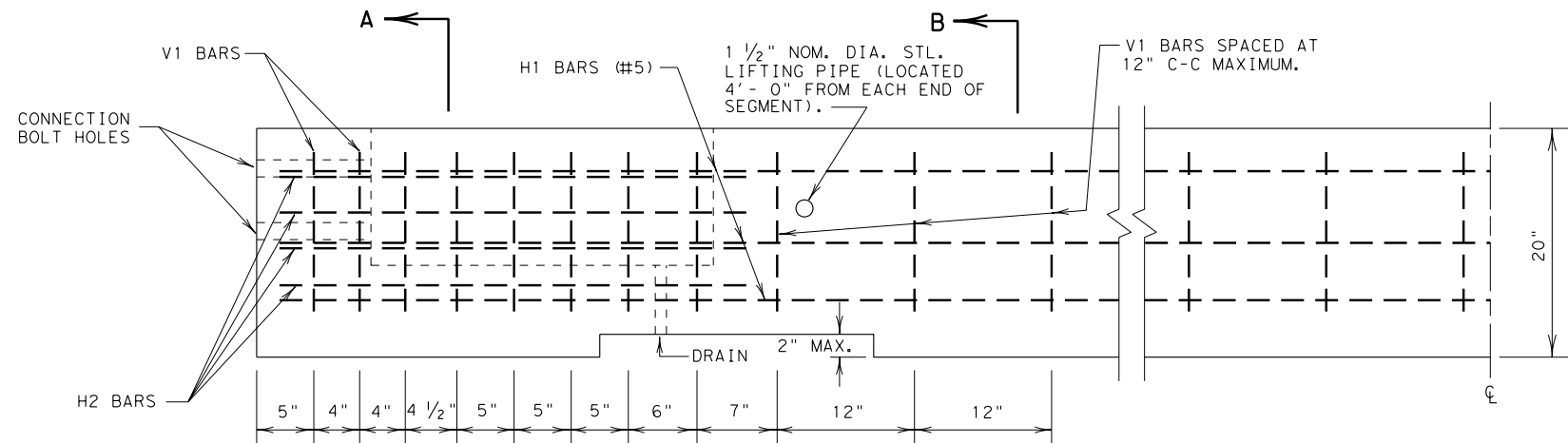
DISCLAIMER: The use of this standard is governed by the "Texas Engineering Practice Act". No warranty of any kind is made by TxDOT for any purpose whatsoever. TxDOT assumes no responsibility for the conversion of this standard to other formats or for incorrect results or damages resulting from its use.

LEVELS DISPLAYED

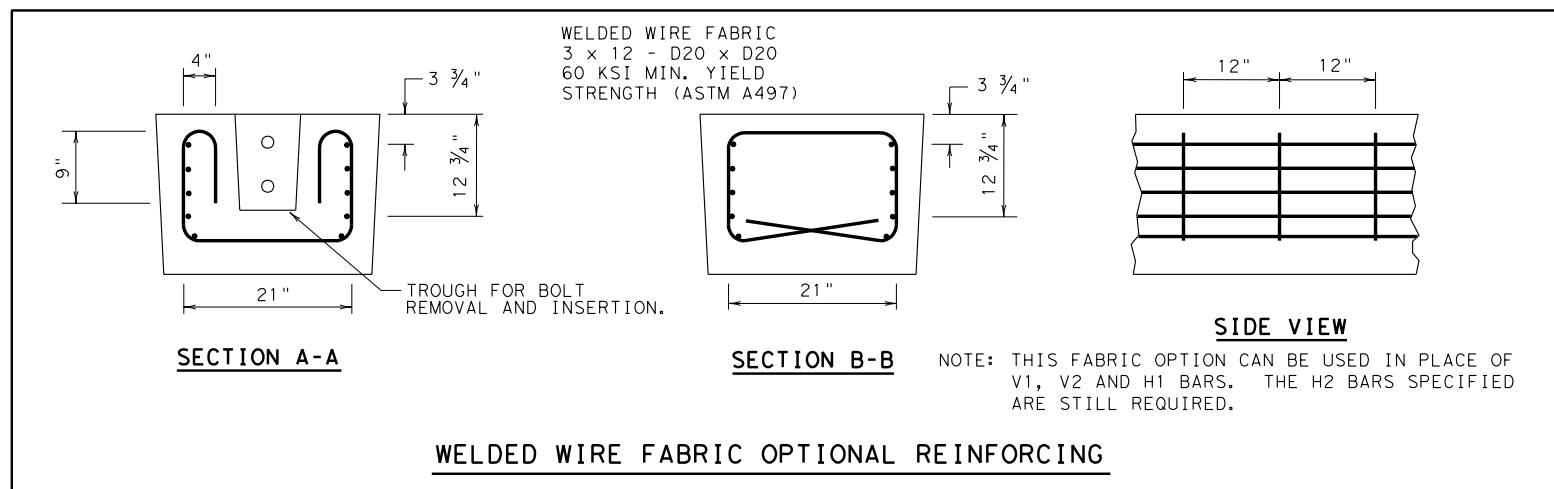


**PLAN VIEW - TYPE 1**  
(SYMMETRICAL ABOUT CENTER LINES)

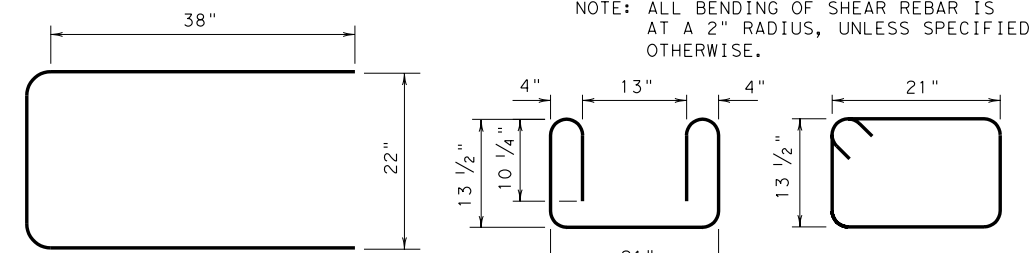
NOTE: CONCRETE ON BOTTOM HALF OF PLAN VIEW IS REMOVED IN ORDER TO SHOW DETAILS



**ELEVATION - TYPE 1**  
(SYMMETRICAL ABOUT CENTER LINES)



**WELDED WIRE FABRIC OPTIONAL REINFORCING**



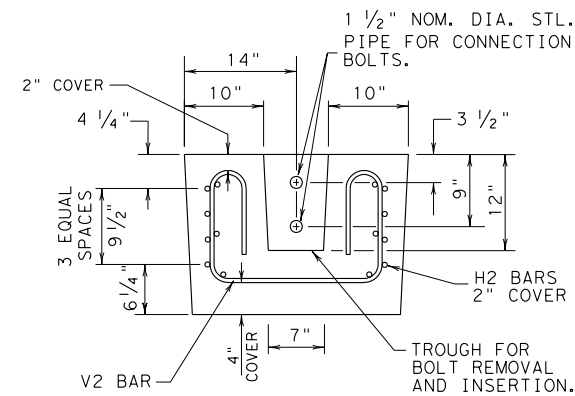
**H2 BAR (#5)**  
(GRADE 60 MIN.)

**V2 BAR (#4)**

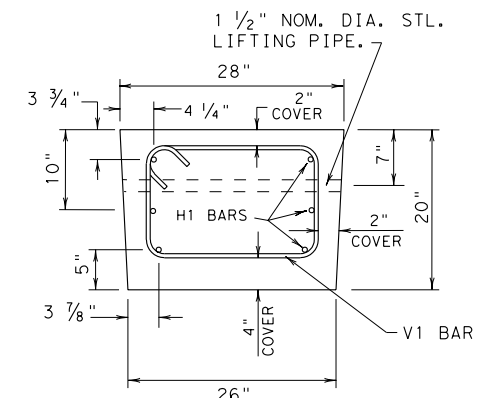
**V1 BAR (#4)**

NOTE: H2 REBAR IS TO BE BENT AT A 3" RADIUS.

**REINFORCING STEEL DETAILS**



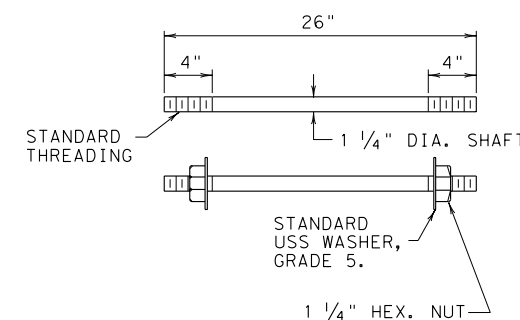
**SECTION A-A**



**SECTION B-B**

**GENERAL NOTES**

1. BARRIER LENGTH SHALL BE 20 FEET (+/- 1 INCH) UNLESS OTHERWISE SPECIFIED IN THE PLANS.
2. ALL CONCRETE, REINFORCEMENT, ANCHOR BOLTS, BLOCKING, ETC., AS SHOWN ARE CONSIDERED AS PART OF THE BARRIER FOR PAYMENT.
3. ALL CONCRETE SHALL BE CLASS A, C, OR H, UNLESS OTHERWISE SPECIFIED.
4. ALL REINFORCING STEEL SHALL BE GRADE 40, UNLESS OTHERWISE SPECIFIED.
5. CHAMFER ALL EDGES 3/4 INCH, AS DIRECTED BY THE ENGINEER.
6. STEEL PIPE SHALL BE HOT DIP GALVANIZED IN CONFORMANCE TO ASTM DESIGNATION A123. BOLTS, NUTS AND WASHERS SHALL BE HOT-DIP GALVANIZED TO ASTM DESIGNATION A153.
7. BOLTS SHALL CONFORM TO ASTM A36. NUTS SHALL CONFORM TO A307 REQUIREMENTS AND SHALL BE TAPPED OR CHASED AFTER GALVANIZING. BOLTS AND NUTS SHALL HAVE CLASS 2A AND 2B FIT TOLERANCES.
8. THE BARRIER SHOULD BE LIGHT IN COLOR AND SHOULD BE SUPPLEMENTED BY DELINEATION AS DETAILED ELSEWHERE IN THE PLANS.



**CONNECTION BOLT**

**FOR CONTRACTORS INFORMATION ONLY**

(TYPE 1)		
APPROX. QUANTITIES 20 FT. SECTION		
CONCRETE	CY	2.6
REINFORCING STEEL	LBS	330
TOTAL BARRIER WT.	LBS	11000

Texas Department of Transportation  
Design Division (Roadway)

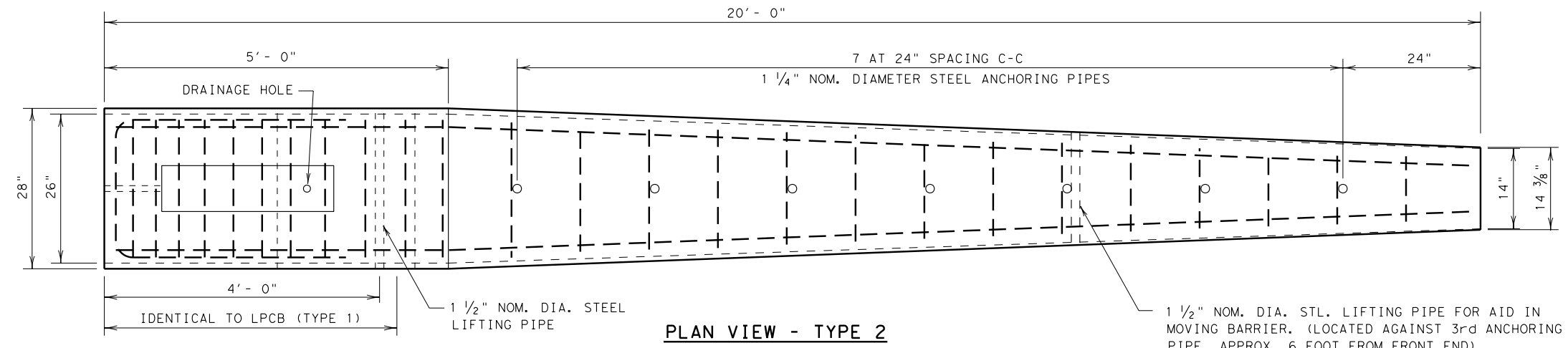
**LOW PROFILE  
CONCRETE BARRIER**  
(PORTABLE AND PRECAST)

**LPCB(1)-92**

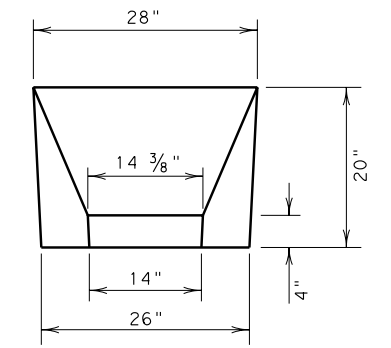
SHEET 1 OF 2

FILE: lpcb192.dgn	DN:	CK:	DW:	CK:
© TxDOT September 1992	DISTRICT	FEDERAL AID PROJECT		SHEET
REVISIONS				
	COUNTY	CONTROL	SECT	JOB HIGHWAY

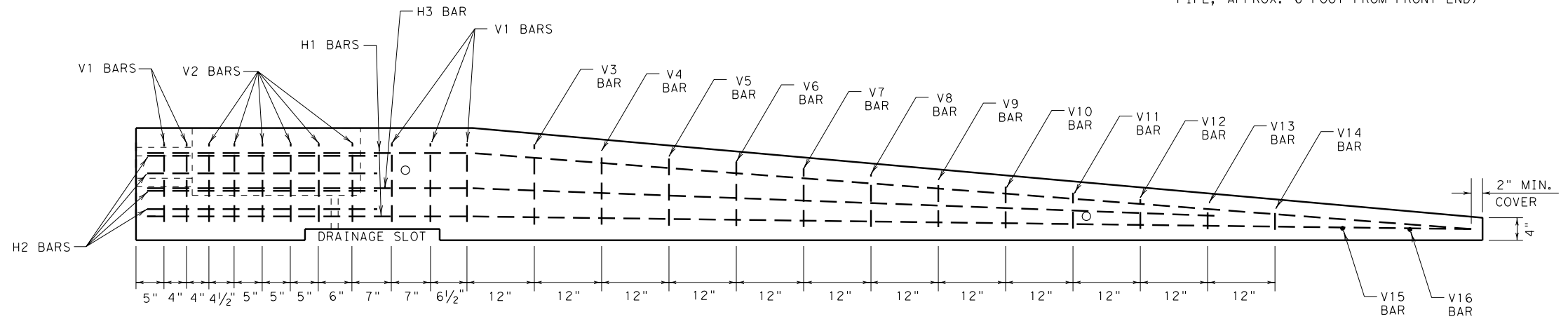
DISCLAIMER: The use of this standard is governed by the "Texas Engineering Practice Act". No warranty of any kind is made by TxDOT for any purpose whatsoever. TxDOT assumes no responsibility for the conversion of this standard to other formats or for incorrect results or damages resulting from its use.



**PLAN VIEW - TYPE 2**

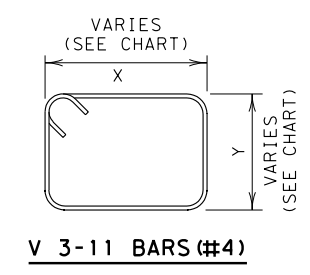


**APPROACH VIEW**



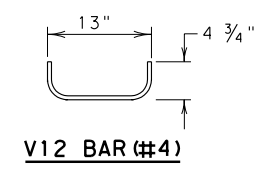
**ELEVATION - TYPE 2**

NOTE: ANCHORING PIPES NOT SHOWN IN ELEVATION.

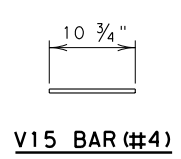


**V 3-11 BARS (#4)**

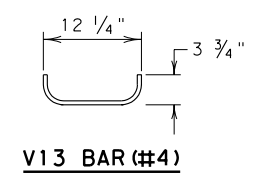
BAR (#4)	X (IN.)	Y (IN.)
V3 BAR	20 1/4	14 1/2
V4 BAR	19 1/2	13 1/2
V5 BAR	18 1/2	12 1/4
V6 BAR	17 1/2	11 1/4
V7 BAR	17	10 1/4
V8 BAR	16 1/4	9
V9 BAR	15 1/2	8
V10 BAR	14 1/2	7
V11 BAR	13 3/4	6



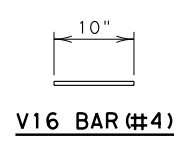
**V12 BAR (#4)**



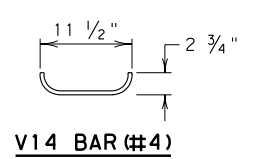
**V15 BAR (#4)**



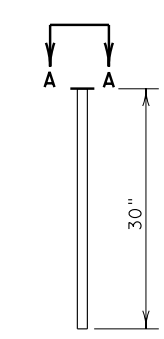
**V13 BAR (#4)**



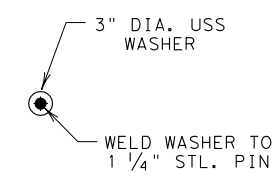
**V16 BAR (#4)**



**V14 BAR (#4)**



**ANCHORING PIN**  
(1 1/4" DIA., A36 STL.)

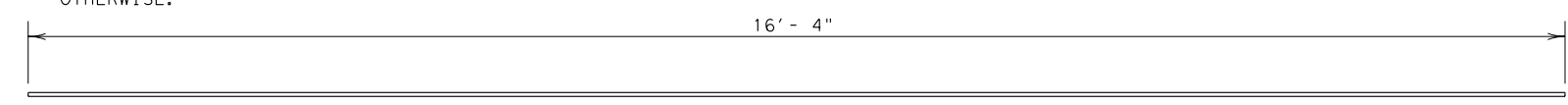


**A-A**  
(HEAD OF ANCHORING PIN)

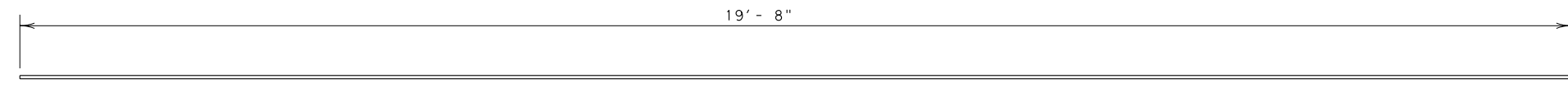
**FOR CONTRACTORS INFORMATION ONLY**

(TYPE 2) APPROX. QUANTITIES 20 FT. SECTION		
CONCRETE	CY	1.65
REINFORCING STEEL	LBS	240
TOTAL BARRIER WT.	LBS	7000

NOTE: ALL BENDING OF SHEAR REBAR IS AT A 2" RADIUS, UNLESS SPECIFIED OTHERWISE.



**H3 BARS (#5)**  
(GRADE 60)



**H1 BARS (#5)**  
(GRADE 60)

**GENERAL NOTES**

- TYPE 2 BARRIER SHALL BE USED AS AN END TREATMENT FOR TYPE 1 BARRIER WHEN APPROPRIATE.
- THE ANCHORAGE PINS ARE ALL THE SAME LENGTH AND ARE INTENDED TO BE DRIVEN FLUSH WITH THE TOP OF THE BARRIER SURFACE.
- THE BENDS IN THE H3 AND H1 BARS ARE SLIGHT, NO FORMAL BEND IS NECESSARY.
- TYPE 2 BARRIER MUST BE LIFTED FROM REAR FIRST TO PREVENT CRACKING OF SLOPED SECTION.
- SEE SHEET 1 OF 2 FOR ADDITIONAL INFORMATION.

Texas Department of Transportation  
Design Division (Roadway)

**LOW PROFILE  
CONCRETE BARRIER**  
(PORTABLE AND PRECAST)

**LPCB(2) -92**

SHEET 2 OF 2

FILE: lpcb192.dgn	DN:	CK:	DW:	CK:
© TxDOT September 1992	DISTRICT	FEDERAL AID PROJECT		SHEET
REVISIONS				
	COUNTY	CONTROL	SECT	JOB HIGHWAY

LEVELS DISPLAYED
1